

Moon™ Helium balloon

Moon™ series helium balloon hot sell in size 2.2m diameter-5m diameter .

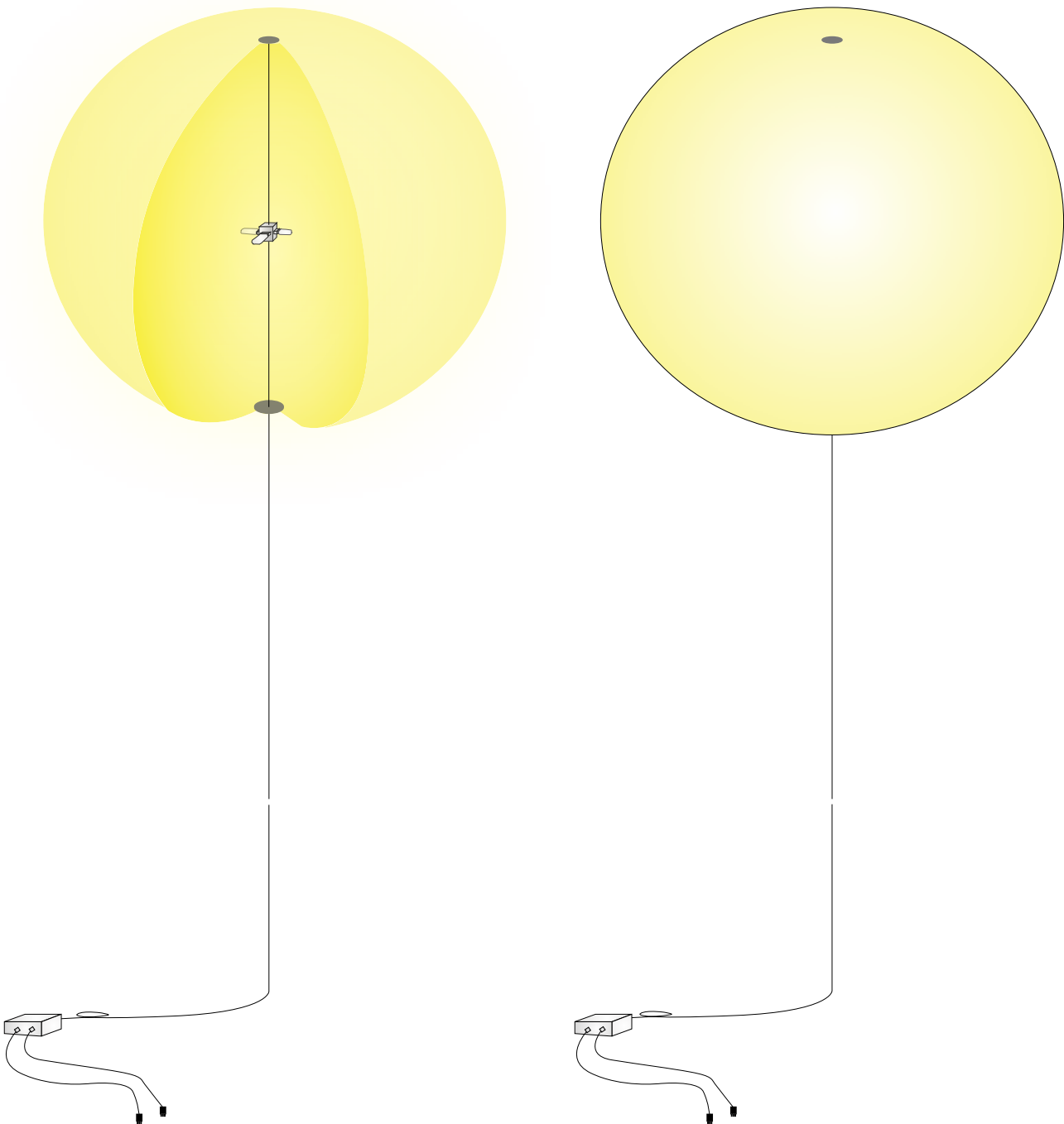


You can scan the QR code below or
visit <https://www.btcoops.com/Moon/for details>



Moon™ Helium balloon

Moon™ Series is specifically designed to provide both illumination and decoration for nighttime event in indoor & outdoor activities. It is an ideal solution for use in a variety of occasions, as long as the helium support is plentiful, you could use them for any intended purpose - illumination, decoration, backgrounding, branding, signal etc. like wedding, family gathering, party, private event, corporate event, other various outdoor and indoor events, concert, sign-in entry, promotion and branding, exhibit & displays, shopping center etc.



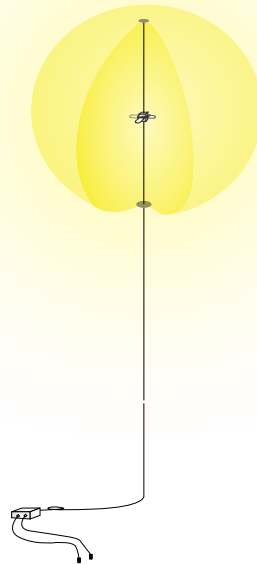
Moon™ - Halogen

helium balloon light

3200k

Dimmable 0~100%

DMX control optional

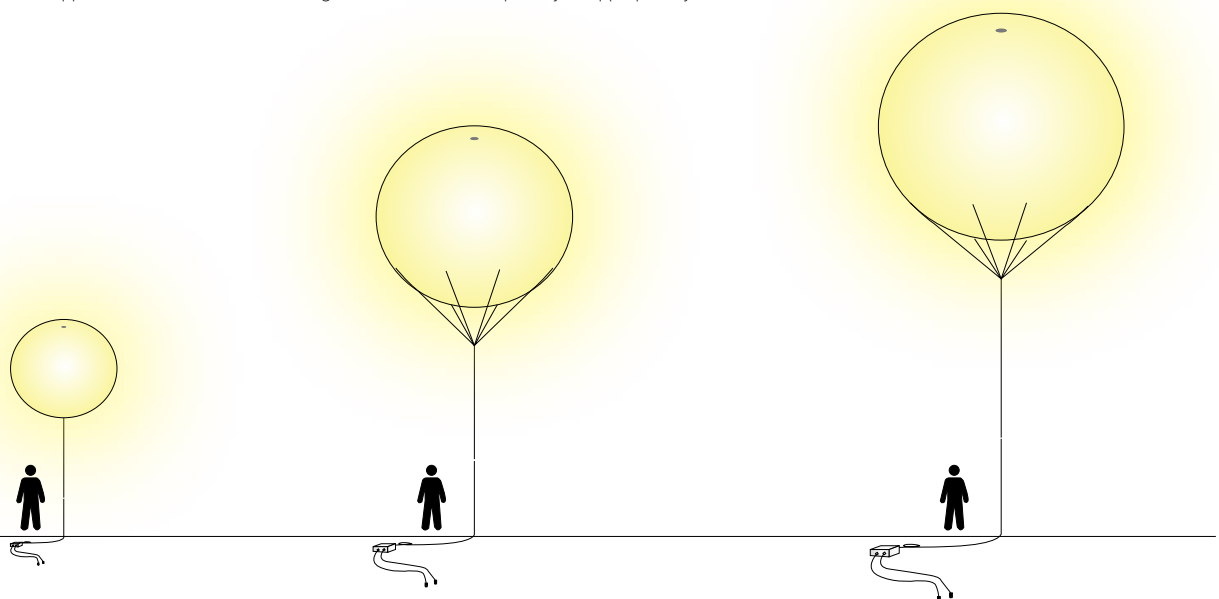


Moon™ - halogen, in treated nylon fabric of glossy surface, dia. 3~5m/9.8~16.4ft

powered by AC230V-50Hz or AC120v-60Hz - suitable for where alternative current main power supply available.

	Moon HA200	Moon HA220	Moon HA250	Moon HA300	Moon HA330	Moon HA380	Moon HA430	Moon HA460	Moon HA500
envelope diameter	2m / 6.6ft	2.2m / 7.2ft	2.5m / 8.2ft	3m / 9.8ft	3.3m / 10.8ft	3.8m / 12.5ft	4.3m / 14.1ft	4.6m / 15.1ft	5m / 16.4ft
helium volume (m ³)	4.2m ³	5.6m ³	8.2m ³	14.1m ³	18.8m ³	28.7m ³	41.6m ³	51m ³	65.4m ³
envelope shape ¹⁾	sphere								
lamp power ^{1),2)}	4 x 650w	4 x 650w	4 x 650w	4 x 1000w	4 x 1000w	8 x 1000w	8 x 1000w	12 x 1000w	16 x 1000w
type of lamp	halogen (R7s or Gx9.5)								
supply voltage	AC 230V/50Hz, AC 120V/60Hz					AC230V/50~60Hz			
line current total	11/22	11/22	11/22	17/33	17/33	35	35	52	70
Main Cables	5G1.5	5G1.5	5G1.5	5G2.5	5G2.5	2 x 5G2.5	2 x 5G2.5	2 x 7G2.5	3 x 6G2.5
No. power plugs	1 / 2	1 / 2	1 / 2	2 / 3	2 / 3	4	4	5	6
Busbox	no/yes	no/yes	no/yes	yes	yes	yes	yes	yes	yes
lumens	70,200	70,200	70,200	108,000	108,000	216,000	216,000	324,000	432,000
color temperature	2,900~3,100 k								
wind resistance	30km/h		40km/h (with adequate anchor & rigging)						

Please note all Moon balloon, besides helium filled float operation, could also be air filled for hanging or suspension in a proper way and space, which is primarily intended for application where or when helium gas is not available temporarily or appropriately.



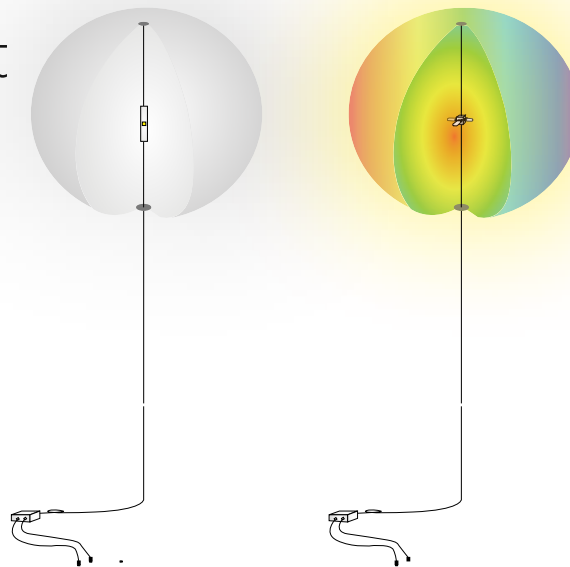
Moon™ - LED

helium balloon light

White 3200/4100/6500k

or RGBW

DMX control optional

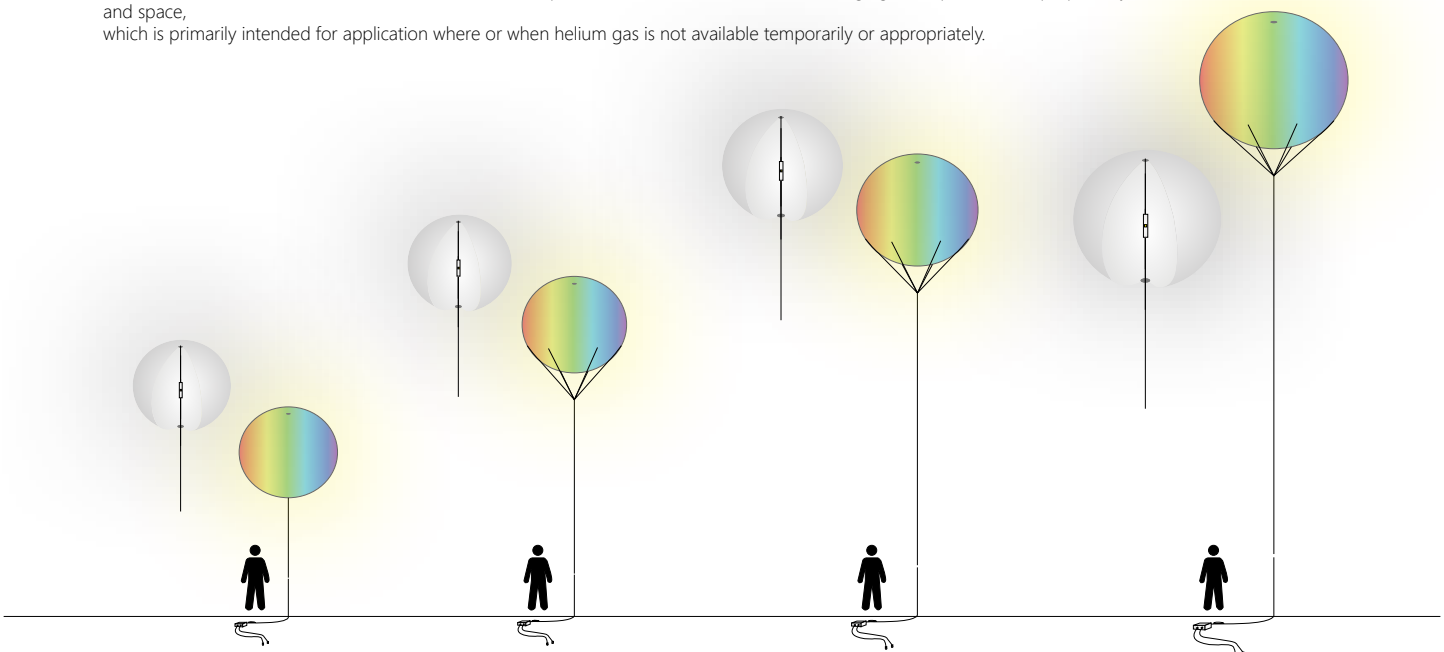


Moon™ - LED white or RGBW, in treated nylon fabric of glossy surface, dia. 3~5m/9.8~16.4ft

powered by AC230V-50Hz or AC120v-60Hz - suitable for where alternative current main power supply available.

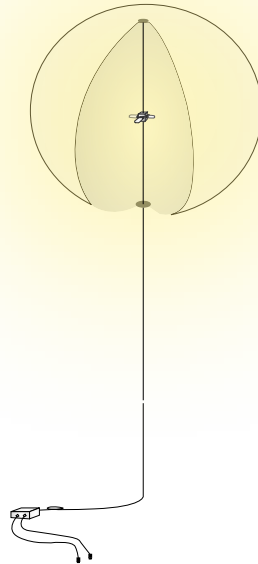
	Moon LED230	Moon LED250	Moon LED300	Moon LED380
envelope diameter	2.3m / 7.5ft	2.5m / 8.2ft	3m / 9.8ft	3.8m / 12.5ft
helium volume (m ³)	6.4m ³	8.2m ³	14.1m ³	28.7m ³
envelope shape ¹⁾	sphere / ellipse / cube / tube			
lamp power ¹⁾²⁾	200w	400w	800w	1,600w
type of lamp	LED COB - White (3200/4100/6500k) or RGBW (remote control or DMX controllable)			
supply voltage	AC 230V/50Hz, AC 120V/60Hz (LED - 32-36V)			
line current total max.	5A	10A	20A	40A
Head Cables	2G1 ~ 8G1			
No. power plugs	1	1	1	1
lumens max.	4,250	6,800	12,750	17,000
color temperature	White (2900k/6500k) or RGB + CCT (2900~6500k)			
wind resistance	30km/h			40km/h (with adequate anchor & rigging)

Please note all Moon balloon, besides helium filled float operation, could also be air filled for hanging or suspension in a proper way and space, which is primarily intended for application where or when helium gas is not available temporarily or appropriately.



Moon™ - HID (metal halide)

helium balloon light
4200k

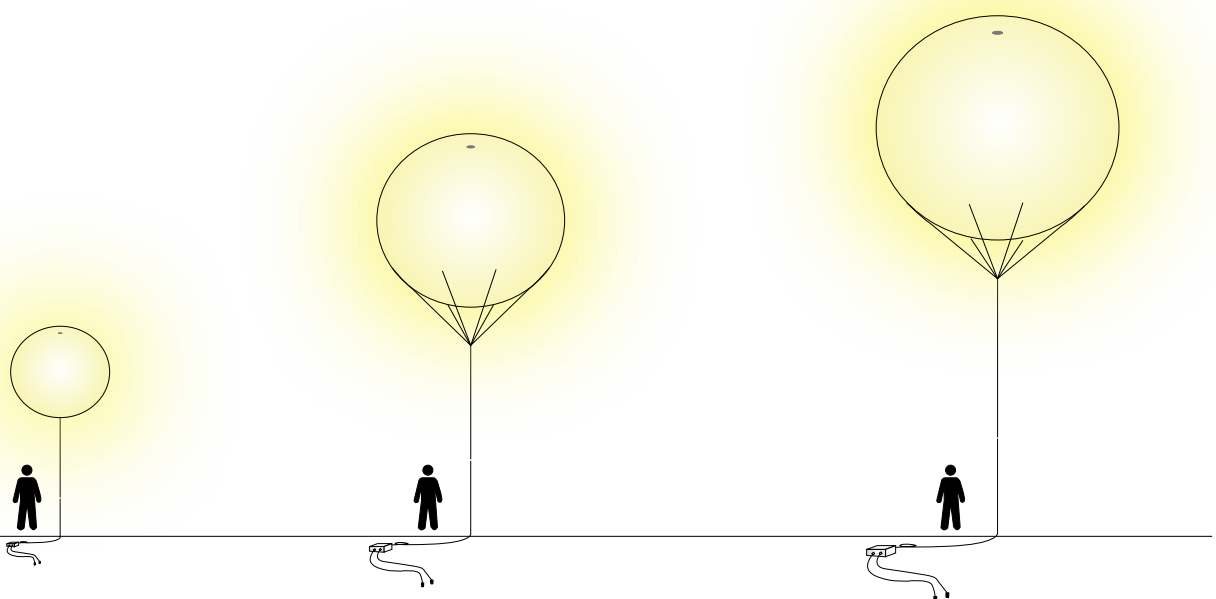


Moon™ - MH, in treated nylon fabric of glossy surface, dia. 3~5m/9.8~16.4ft

powered by AC200~240V / 50~60Hz.

	Moon MH300	Moon MH380	Moon MH500
envelope diameter	3m / 9.8ft	3.8m / 12.5ft	5m / 16.4ft
helium volume	14.1m ³	28.7m ³	65.4m ³
envelope shape ¹⁾	sphere		
lamp power ^{1) 2)}	2 x 1000w	4 x 1000w	8 x 1000w
type of lamp	metal halide - M47		
supply voltage	AC 230V / 50Hz - europe; or AC 120/208/244/277V -60Hz, North America CWA		
line current total	9.54 A or 18/10.4/9/7.8 A	19 A or 36/20.8/18/15.6 A	38 A or 72/41.6/36/31.2 A
Main Cables	5G1.5	5G2.5	2 x 5G2.5
No. power plugs	1	2	4
Busbox	no	yes	yes
lumens	220,000	440,000	880,000
color temperature	4,200 k		
wind resistance	40km/h (with adequate anchor & rigging)		

Please note all Moon balloon, besides helium filled float operation, could also be air filled for hanging or suspension in a proper way and space, which is primarily intended for application where or when helium gas is not available temporarily or appropriately.



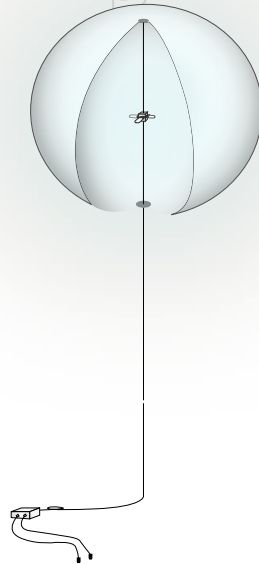
Moon™ - HMI - film grade

helium balloon light

5600~6000k

film-grade light source

& glare-free electronic ballast

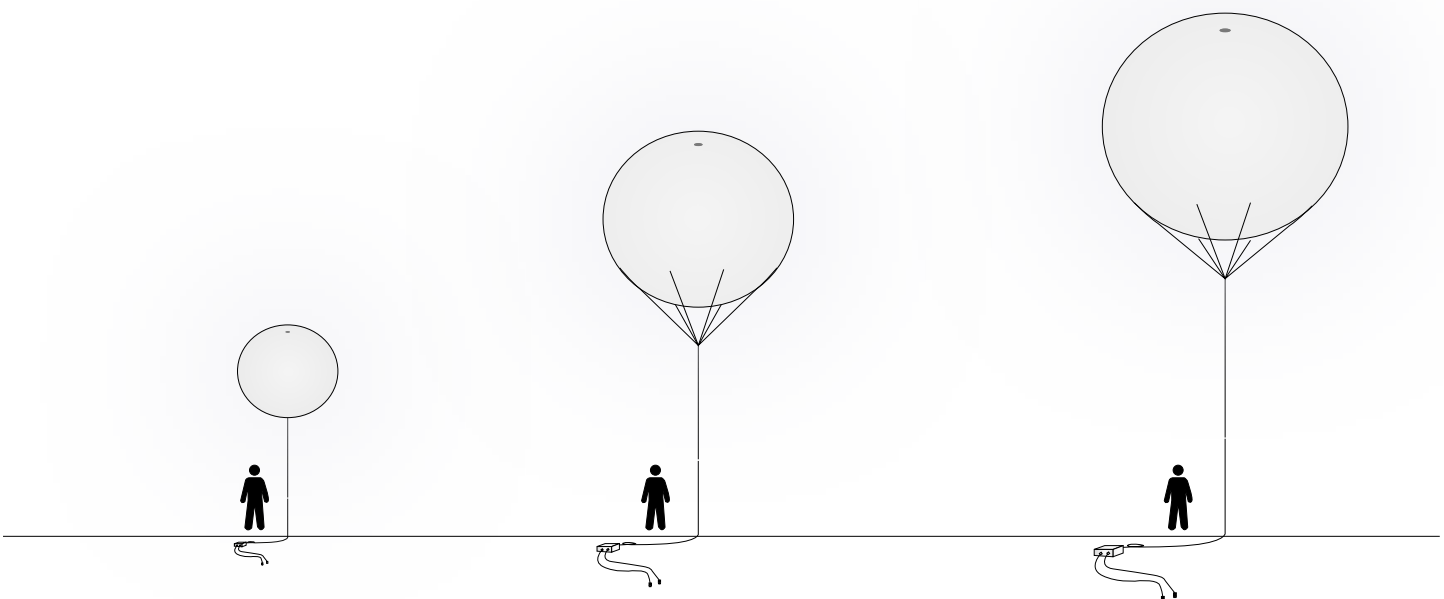


Moon™ - HMI, in treated nylon fabric of glossy surface, dia. 3~5m/9.8~16.4ft

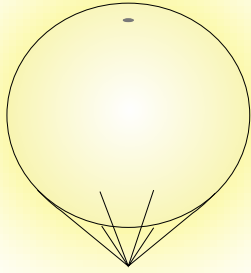
powered by AC200~240V / 50~60Hz.

	Moon HMI300	Moon HMI380	Moon HA500
envelope diameter	3m / 9.8ft	3.8m / 12.5ft	5m / 16.4ft
helium volume	14.1m ³	28.7m ³	65.4m ³
envelope shape ¹⁾	sphere		
lamp power ^{1) 2)}	2 x 1200w	4 x 1200w	4 x 2500w
type of lamp	HMI		
supply voltage	200~240V / 50~60Hz		
line current total	10A	20A	40A
Main Cables	5G1.5	5G2.5	2 x 5G2.5
No. power plugs	1	2	4
Busbox	no	yes	yes
lumens	220,000	440,000	1,000,000
color temperature	5,600 ~ 6,000 k (possible to add halogen for color correction)		
wind resistance	40km/h (with adequate anchor & rigging)		

Please note all Moon balloon, besides helium filled float operation, could also be air filled for hanging or suspension in a proper way and space, which is primarily intended for application where or when helium gas is not available temporarily or appropriately.

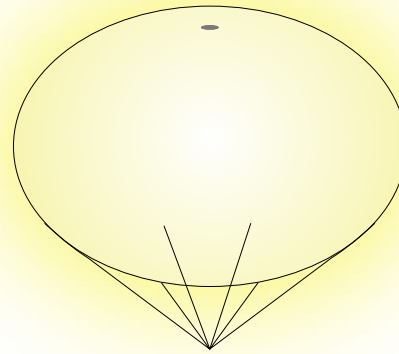
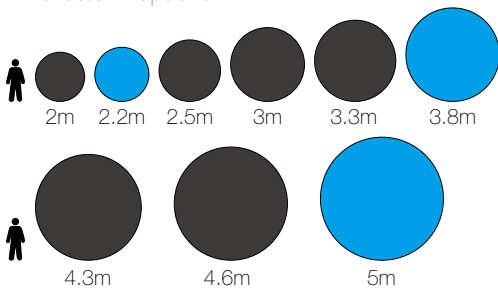


Moon™ - BALLOON Shape & Dimension



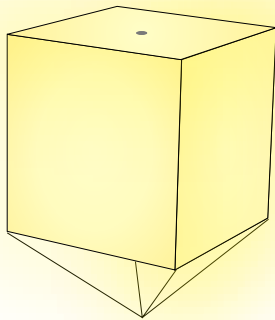
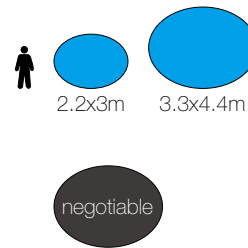
standard sphere - SS

- popular diameter
- other diameter
- reflector - optional



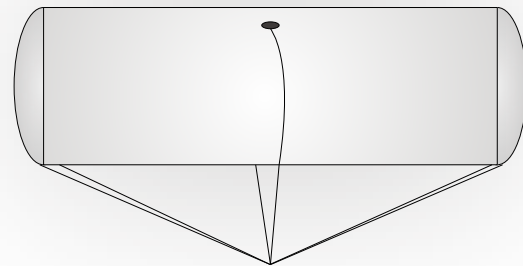
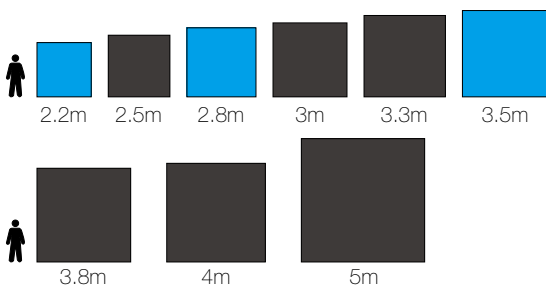
round ellipse - RE

- popular dimension (h x l)
- other dimension - negotiable
- reflector - optional



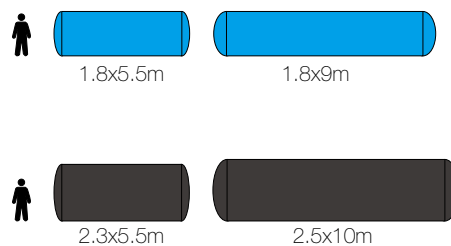
standard cubic - SC

- popular dimension
- other dimension
- cover reflector - optional

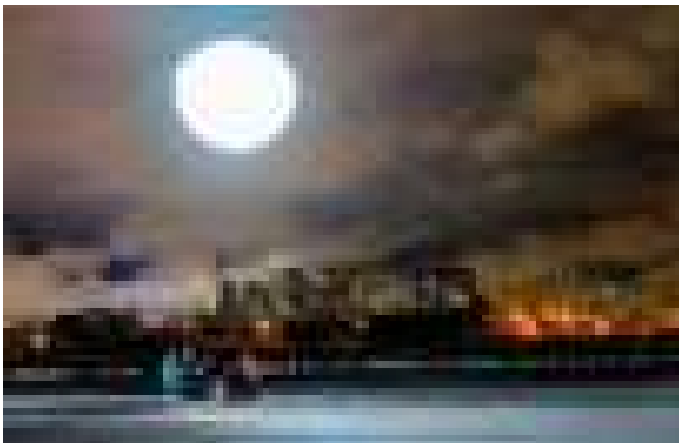
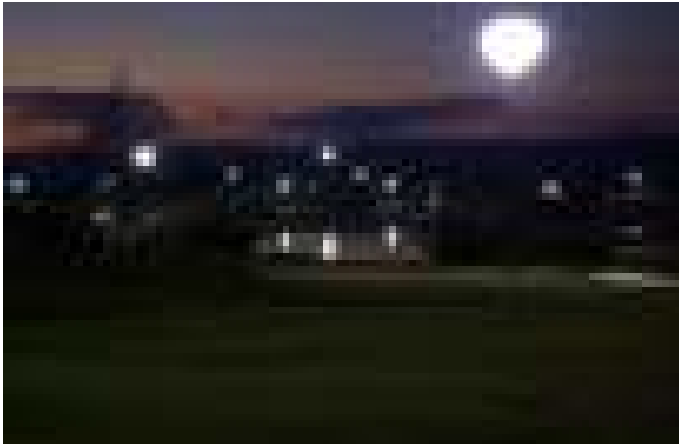


round tube - RT

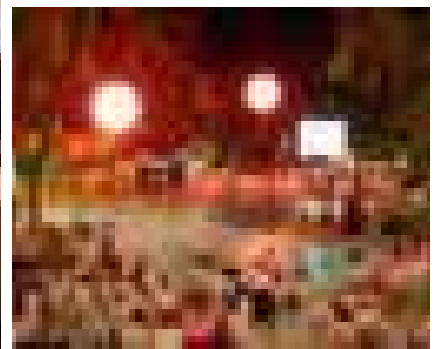
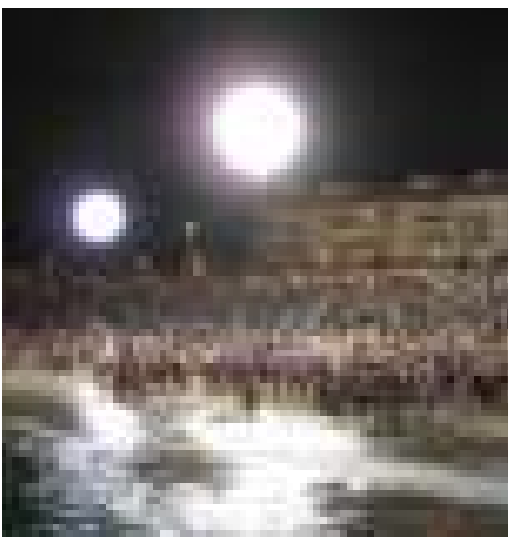
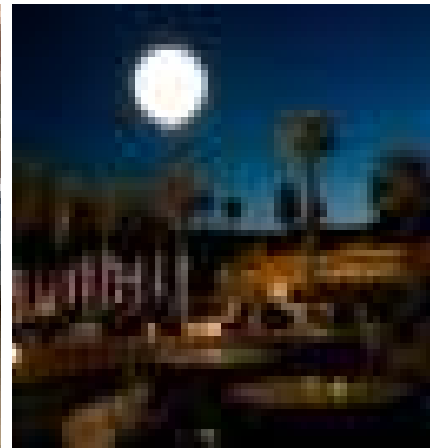
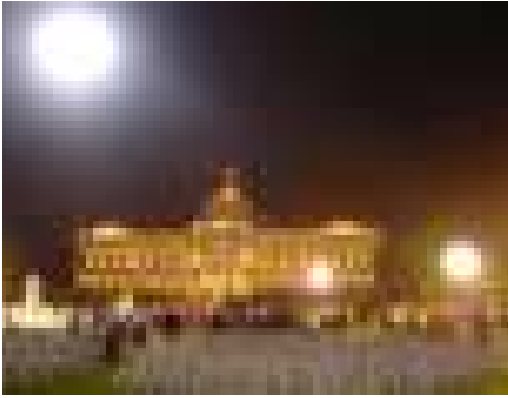
- dimension for illumination only
- dimension for illumination & commercials
- cover reflector - optional



Moon™ - applications



Moon™ - applications



Moon™ - applications

